

AREA3 KALANG PARK (EAST) RECOMMENDATIONS

PARK FACILITIES

Trails & Pathways

- 1a. Drainage Issues
- 1b. Redesign Trail Alignment
- 1c. Improve access to Molleton Street.

Entrances & Signage

- 2a. Blackburn Creeklands, Blackburn Station & Village signage
- 2b. Sign to Blackburn Station & Village
- 2c. Sign to Blackburn South shops

Car Parking & vehicle access

- 5a. Suitable traffic / calming pedestrian crossing needed

Lighting

- 6a. Install mains powered lights or offset solar panel

CREEK ENVIRONS & DRAINAGE

(As per Ove Arup Report 1999 for Melbourne water).

- 8a. Bank stabilisation and revegetation
- 8b. Rock chute / rock pool & stream re-alignment
- 8c. Revegetation adjacent to creek
- 8d. Creek profile works

VEGETATION & HABITAT

- 9a. Investigate expansion of Wetland. Monitor, diversify planting & habitat
- 9b. Deepen wetland in places. Weed control
- 9c. Retain Pines.
- 9c. Retain Willow.
- 9d. Weed control/ exotic grasses. Revegetation- future canopy trees
- 9e. Fire breaks- controlled burns & weed control
- 9f. Reduce number of mown tracks
- 9g. Expand revegetation- subject to fire considerations
- 9h. Indigenous revegetation
- 9i. Light screen planting where possible to soften fenceline and creek, including avenue of trees
- 9j. Review location of Pines for possible removal
- 9k. Remove Pines & other weeds
- 9l. Liaise with owners to protect Tree Violets on adjoining property
- 9m. Progressively remove woody weeds around entrance & revegetate

TERRAIN & ASPECT

- 10a. Retain grassed parkland

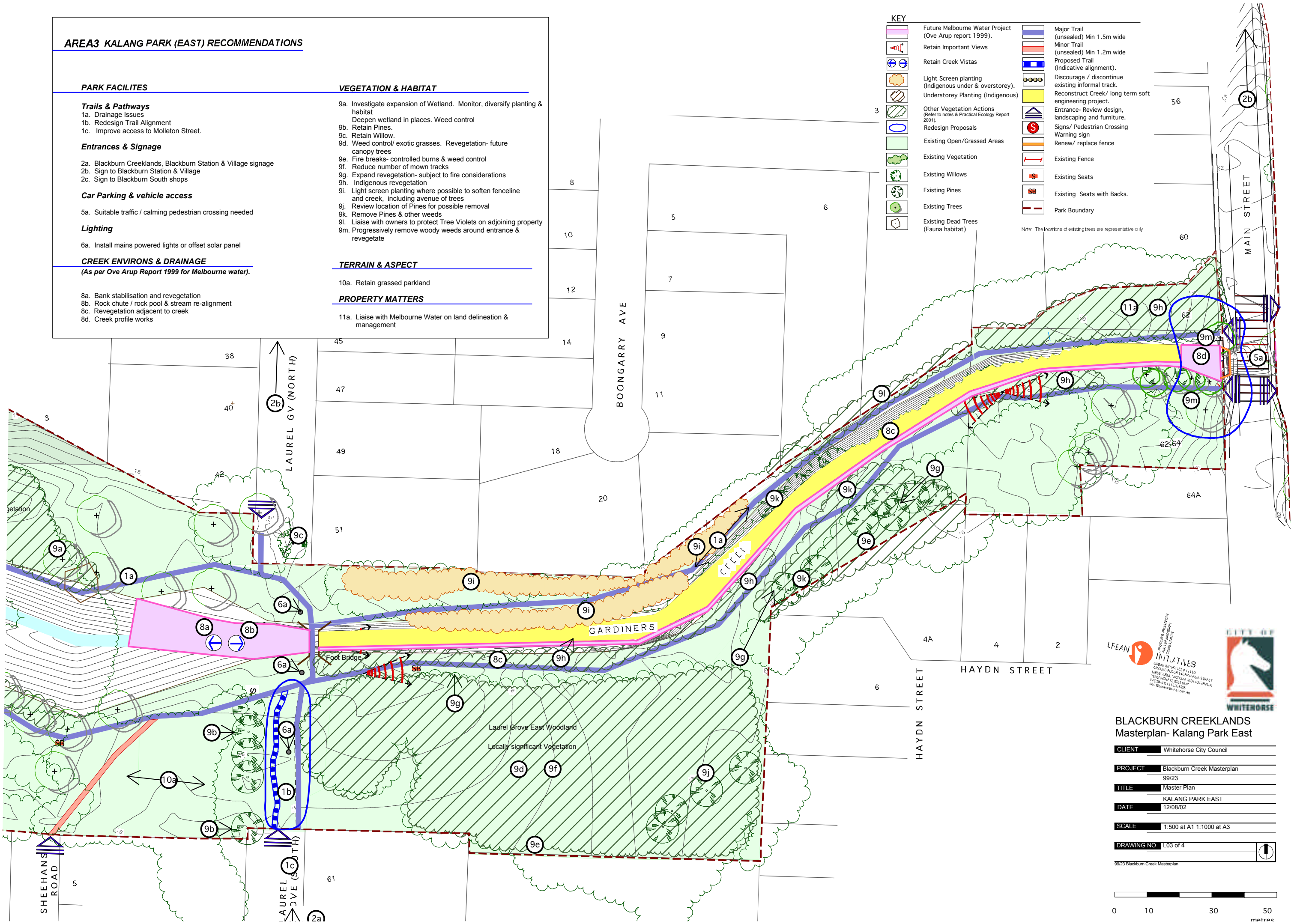
PROPERTY MATTERS

- 11a. Liaise with Melbourne Water on land delineation & management

KEY

- | | | | |
|--|--|--|--|
| | Future Melbourne Water Project (Ove Arup report 1999). | | Major Trail (unsealed) Min 1.5m wide |
| | Retain Important Views | | Minor Trail (unsealed) Min 1.2m wide |
| | Retain Creek Vistas | | Proposed Trail (Indicative alignment). |
| | Light Screen planting (Indigenous under & overstorey). | | Discourage / discontinue existing informal track. |
| | Understorey Planting (Indigenous) | | Reconstruct Creek/ long term soft engineering project. |
| | Other Vegetation Actions (Refer to notes & Practical Ecology Report 2001). | | Entrance- Review design, landscaping and furniture. |
| | Redesign Proposals | | Signs/ Pedestrian Crossing Warning sign |
| | Existing Open/Grassed Areas | | Renew/ replace fence |
| | Existing Vegetation | | Existing Fence |
| | Existing Willows | | Existing Seats |
| | Existing Pines | | Existing Seats with Backs. |
| | Existing Trees | | Park Boundary |
| | Existing Dead Trees (Fauna habitat) | | |

Note: The locations of existing trees are representative only



BLACKBURN CREEKLANDS Masterplan- Kalang Park East

CLIENT	Whitehorse City Council
PROJECT	Blackburn Creek Masterplan 99/23
TITLE	Master Plan
DATE	KALANG PARK EAST 12/08/02
SCALE	1:500 at A1 1:1000 at A3
DRAWING NO	L03 of 4

